


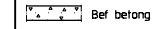
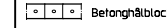

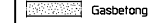

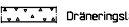


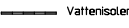
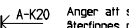
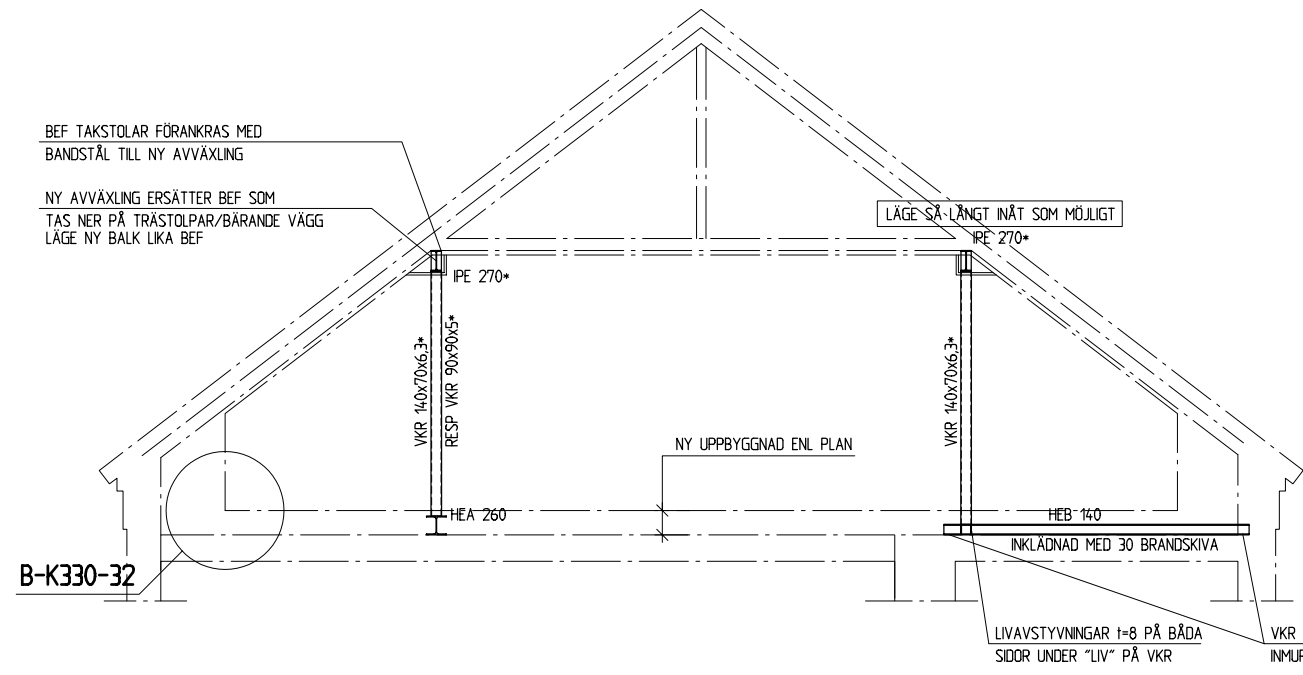


Förklaringar

-  Betong
-  Vattentät betong
-  Prefab betong
-  Bef betong
-  Betonghålblock
-  Teget
-  Gasbetong
-  Lättkinker
-  Dräneringslager
-  Mineralull
-  Cellplast, cellglas
-  Vattensivering
-  A-K20

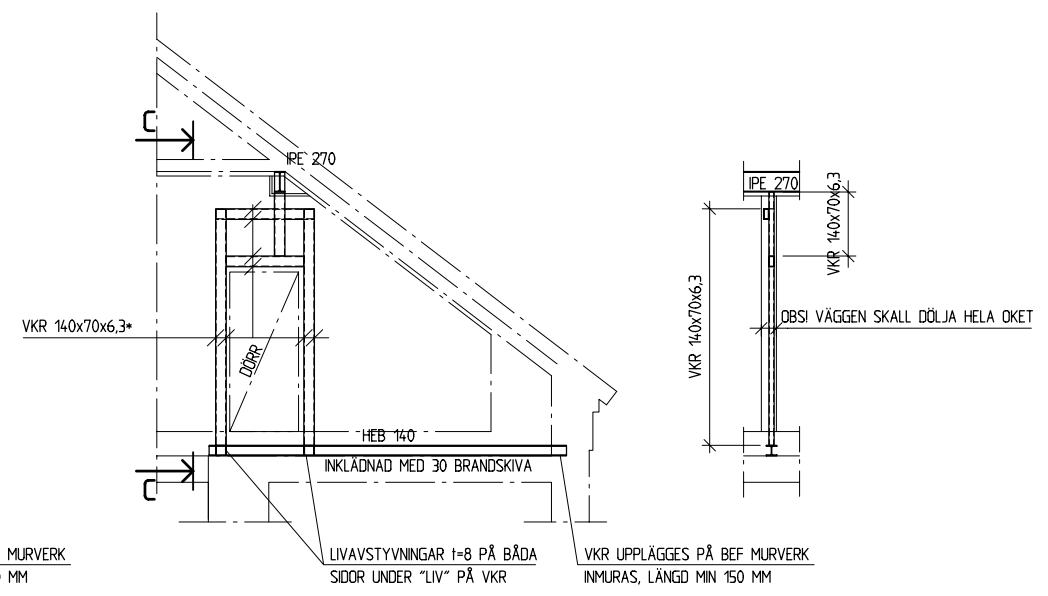
Anger att sektionen återfinnes på ritning K20



B-K330-32

A 1:50

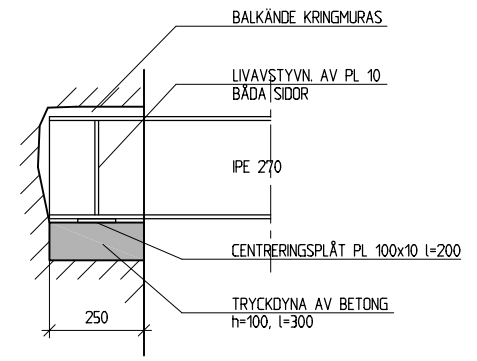
* INKLÄDS I VÄGG R60, SOM FRITT EXPONERAD INKLÄDNAD MED 2x15 PROTECT F (R60)



B 1:50

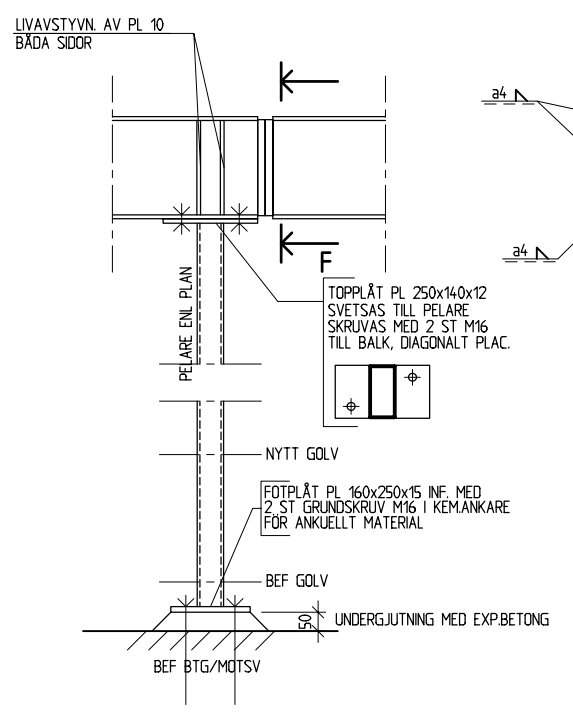
OK FÖR UPPLAG ÖVER DÖRR, SAMTLIG SVETS a=4
* INKLÄDS I VÄGG R60, SOM FRITT EXPONERAD INKLÄDNAD MED 2x15 PROTECT F (R 60)

C 1:50



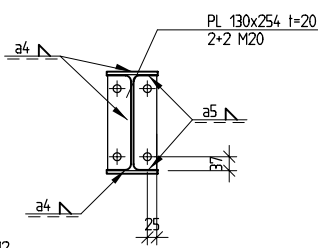
D 1:10

PRINCIP UPPLÄGGNING AV TAKBALKAR PÅ BEF MURVERK



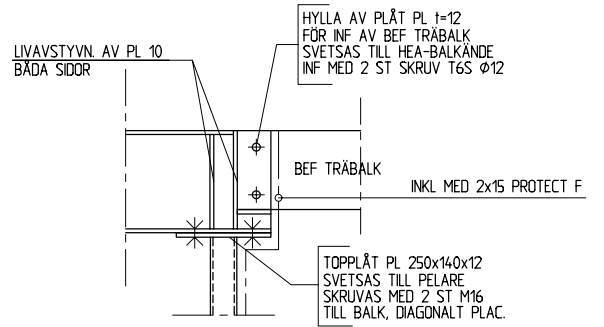
E 1:10

PRINCIP PELARINF. TILL BEF MURVERK

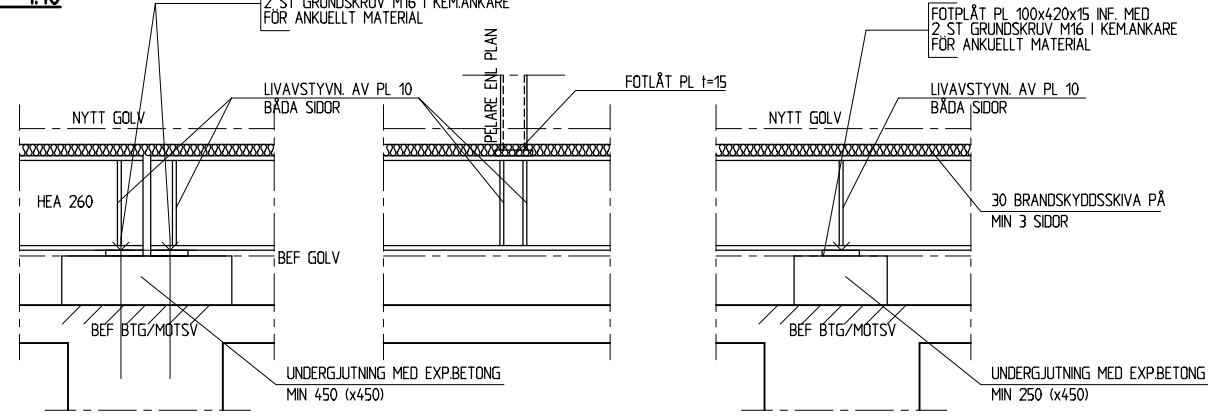


F 1:10

FOTPLÅT PL 100x420x15 INF. MED 2 ST GRUNDSKRUV M16 I KEMANKARE FÖR ANKUELLT MATERIAL



K 1:10



G 1:10

PRINCIP BALK I GOLV/INF. SKARV

H 1:10

PRINCIP PELARINF. TILL NY GOLVBALK

J 1:10

PRINCIP BALK I GOLV/INF. STÖD

RELATIONSHANDLING		03-04-04
BET	ANT	ANDRINGEN AVSER

RELATIONSHANDLING	SIGN	DATUM
-------------------	------	-------

VASALLEN

PROJEKTNUMMER

A NP arkitekter Ystad 0411-55 75 30
K J&W Byggnadsprojektering 044-21 58 20
V XXXXX
E Industri EL i Kristianstad AB 044-21 91 20
VS Team Skåne VVS AB 040-600 40 00

UPPDRAG NR 1002 1481	HANDLÄGGARE B JOHANSSON	ANSVARIG/OMBUD L JOHANSSON
DATUM 2002-08-26	SKALA 1:50	FASTSTÄLLD L JOHANSSON
PORTALKASERN 43 LV4, YSTAD OMBYGGNAD		
DETALJER TILL TAK		
RITNINGSDEFINITIONSFIL:	AUTOCAD VER.:	
OBJEKT ID	RITNINGNUMMER	I BET
	K330-31	